

COMPANY SOLAR UP&DOWN DOWNLIGHT IN-GROUND BRICKLIGHT FLOODLIGHT BOLLARD BULKHEAD GARDEN URBAN CLASSIC URBAN MODERN POST LAMPS REFERENCES

SIMON HIGH POWER LED

LARGE SIZE



Square lantern made in shockproof resin material, UV rays stabilized, rust and corrosion-free. Modular construction suitable for post top, wall and hanging installation. Provided with reflective ceiling designed to host the lighting source and equipped with TÜV-CB certified, long-life and efficient **E27 high power LED lamp included**. Insulation class II, Protection rating IP55.

*Lanterna quadra realizzata in resina antiurto, stabilizzato ai raggi UV, inattaccabile da ruggine e corrosione. Idonea per il montaggio a palo, a sospensione o a parete. Provvista di soffitto riflettente progettato per accogliere la sorgente luminosa e fornita **completa di lampada a LED E27 ad ALTA POTENZA**, certificata TÜV-CB di lunga durata ed elevata efficienza. Classe di isolamento II, grado di protezione IP55.*



U33.132.Q1K

E27 HIGH POWER LED

INDOOR & OUTDOOR USE

+80°C
-30°C

90% HUMIDITY

VOLTAGE SURGE RESISTANT

DRIVER SILICONE PROTECTION

CCT SETTABLE

3000 K 4000 K

SDCM <6



SIMON HIGH POWER LED - LANTERN COMPONENTS

IP55



Decorative **PINNACLE** to be mounted on the roof top for post installation or on the lantern base for hanging installation.

PINNACOLO decorativo applicabile alla sommità del tetto (montaggio a palo) o sulla base della gabbia (montaggio a sospensione).

Lantern **ROOF** made of shockproof resin material. Tool-free opening for relamping and maintenance.

TETTO realizzato in resina antiurto. Rimovibile senza l'ausilio di attrezzi per manutenzione e cambio lampadina.

High temperature resistant reflective **CEILING** made of shockproof resin material. Provided with E27 lampholder and equipped with **HIGH POWER LED lamp**. Designed to host and protect the lighting source, granting its safe and quick installation.

SOFFITTO riflettente realizzato in resina antiurto ad alta resistenza al calore. Fornito completo di portalamпада E27 e provvisto di lampada a LED ad ALTA POTENZA. Progettato per accogliere e proteggere la sorgente luminosa garantendone una veloce e sicura installazione.

DIFFUSER of UV-rays stabilized PMMA, with recess for a power supply cable. One piece only closed at the base to ensure high protection against external agents.

DIFFUSORE in PMMA resistente ai raggi UV, provvisto di sede per l'alloggiamento del cavo di alimentazione. Realizzato in unico pezzo chiuso alla base per garantire un alto livello di protezione contro gli agenti esterni.

CAGE made of shockproof resin material, UV-rays stabilized, rust and corrosion-free.

GABBIA realizzata in resina antiurto, stabilizzata ai raggi UV, inattaccabile da ruggine e corrosione.

SIMON HIGH POWER LED

U33.000 *



Dimensions and weight

Height: 560 mm
Width: 330 mm
Depth: 330 mm
Weight: 4,6 Kg
Junction to support: diameter 60 mm
Area exposed to wind pressure:
CxS = m² 0,102

Moulded colours:

Black White

Painted colours:

Antique green Antique bronze

Diffuser PMMA:

Clear Opal

HIGH POWER LED



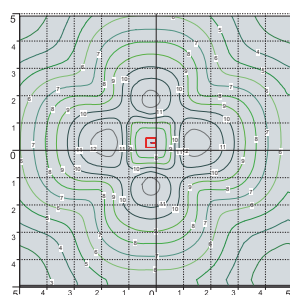
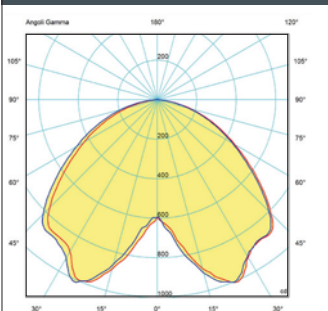
- **COST SAVING:** long-life and efficient LED light source.
- **BUILT-IN DRIVER:** quick and easy lamp replacement.
- **GREAT FLEXIBILITY:** E27 standard lamp holder.
- **FUTURE-PROOFED LUMINARIES:** performances easy to upgrade to latest technology developments.
- **SUITABLE FOR OUTDOOR USE:** built-in driver fully protected against heat and humidity by silicone paste.

Lantern equipped with TÜV-CB certified, long-life and efficient **E27 high power LED lamp**, granting the same luminous flux of traditional SON/HQI lighting sources. The lamp can be quickly and easily replaced, making the luminaries maintenance very simple.

100 - 240 V

LAMP	POWER	LUMINOUS FLUX UP TO	COLOUR TEMP.	*ADD. SUFFIX
(*)	15 W	1690 lm	4000 K	.R1K
			3000 K	
CCT SET LED E27	30 W	3620 lm	4000 K	.Q1K
			3000 K	
LED E27	50W	6550 lm	4000 K	.H1L
			3000 K	

PHOTOMETRIC DATA SAMPLE



SIMON E27 LED HIGH POWER 30W

POST height 3,5mt
10x10mt area: average 15 lux

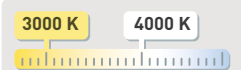
The photometric data for all the versions are available upon request or on our website.

LED LAMPS



Comply with: EU2019/2015
EU2019/2020
Technical details on page 596.

CCT SETTABLE LED LAMP(*)



CCT switch settable in two different positions, to select the desired Kelvin temperature (3000K/4000K) and get a customized ambiance. (15 and 30W only)

* ADD THESE SUFFIXES TO THE REFERENCES MENTIONED IN THE CATALOGUE

SIMON

LARGE SIZE



U33.157.Q1K



U33.121.Q1K



U33.132.Q1K



U33.113.Q1K



U33.162.Q1K



MADE IN ITALY

OFIR/SIMON
U33.132
GX53 U35.132
Pcs 1
Kg 5,6
mc 0,061

EVA/SIMON
U33.181
GX53 U35.181
Pcs 1
Kg 12,3
mc 0,168

SIMON
U33.000
GX53 U35.000
Pcs 1
Kg 4,6
mc 0,043

LOT/SIMON
U33.113
GX53 U35.113
Pcs 1
Kg 5,8
mc 0,061

MIRRA/SIMON
U33.142
GX53 U35.142
Pcs 1
Kg 10,9
mc 0,083

SICHEM/SIMON
U33.121
GX53 U35.121
Pcs 1
Kg 5,4
mc 0,061

RICU/SIMON
U33.157
GX53 U35.157
Pcs 2
Kg 29,2
mc 0,334

GIGI/SIMON
U33.156
GX53 U35.156
Pcs 2
Kg 27,7
mc 0,304

ARTU'/SIMON
U33.158
GX53 U35.158
Pcs 2
Kg 24,7
mc 0,273

ALOE'/SIMON
U33.163 resin
GX53 U35.163 resin
Pcs 2
Kg 15,2
mc 0,208

IAFET.R/SIMON
U33.162 resin
GX53 U35.162 resin
Pcs 2
Kg 14,5
mc 0,179

NEBO/SIMON

LARGE SIZE





NEBO OFIR/SIMON 2L
U33.201.R20
U35.201.R20

GX53
Pcs 1
Kg 31,9
mc 0,268

NEBO OFIR/SIMON 3L
U33.201.R30
U35.201.R30

GX53
Pcs 1
Kg 36,5
mc 0,342

NEBO/SIMON
U33.201
U35.201

GX53
Pcs 1
Kg 25,6
mc 0,196

Ø 275

NEBO OFIR/SIMON 2L
U33.201.R20
U35.201.R20

GX53
Pcs 1
Kg 31,9
mc 0,268

Ø 275

NEBO OFIR/SIMON 3L
U33.201.R30
U35.201.R30

GX53
Pcs 1
Kg 36,5
mc 0,342

Ø 275

TABOR/SIMON

LARGE SIZE





TABOR OFIR/SIMON 2L
U33.204.R20
GX53 U35.204.R20
Pcs 1
Kg 36,5
mc 0,268

TABOR OFIR/SIMON 3L
U33.204.R30
GX53 U35.204.R30
Pcs 1
Kg 41,1
mc 0,342

TABOR/SIMON
U33.204
GX53 U35.204
Pcs 1
Kg 30,1
mc 0,196

TABOR OFIR/SIMON 2L
U33.204.R20
GX53 U35.204.R20
Pcs 1
Kg 36,5
mc 0,268

TABOR OFIR/SIMON 3L
U33.204.R30
GX53 U35.204.R30
Pcs 1
Kg 41,1
mc 0,342

COMPANY SOLAR UP&DOWN DOWNLIGHT IN-GROUND BRICKLIGHT FLOODLIGHT BOLLARD BULKHEAD GARDEN URBAN CLASSIC URBAN MODERN POST LAMPS REFERENCES

HOREB/SIMON

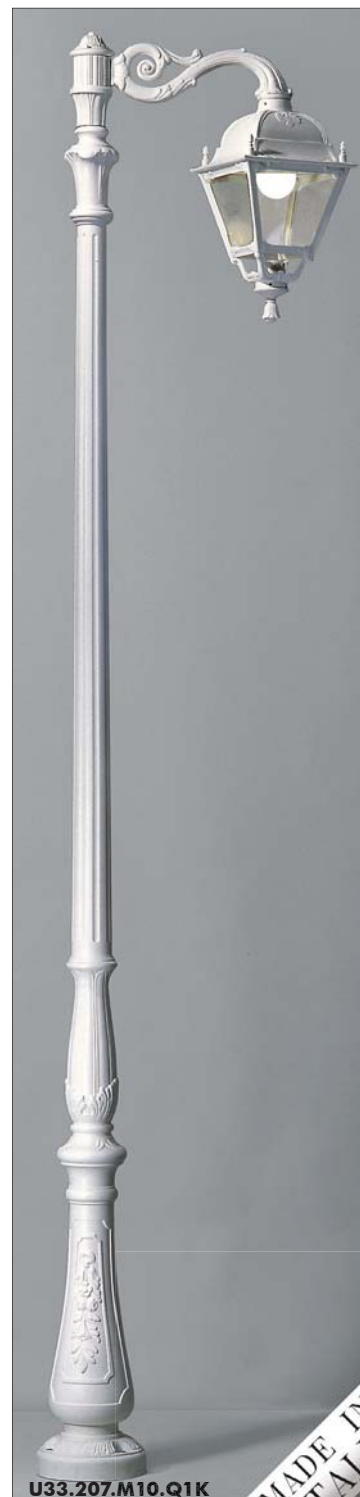
LARGE SIZE



U33.207.M20.Q1K



U33.171.Q1K



U33.207.M10.Q1K



MADE IN ITALY

HOREB ADAM/SIMON 1L
U33.207.M10
GX53 U35.207.M10

Pcs 1
Kg 34,5
mc 0,280

ADAM/SIMON
U33.171
GX53 U35.171

Pcs 1
Kg 6,1
mc 0,083

HOREB ADAM/SIMON 2+1
U33.207.M21
GX53 U35.207.M21

Pcs 1
Kg 46,4
mc 0,404

HOREB/SIMON
U33.207
GX53 U35.207

Pcs 1
Kg 32,6
mc 0,249

Ø 275

HOREB ADAM/SIMON 3+1
U33.207.M31
GX53 U35.207.M31

Pcs 1
Kg 52,4
mc 0,476

Ø 275

HOREB ADAM/SIMON 3L
U33.207.M30
GX53 U35.207.M30

Pcs 1
Kg 47,8
mc 0,414

HOREB ADAM/SIMON 2L
U33.207.M20
GX53 U35.207.M20

Pcs 1
Kg 41,8
mc 0,342

KARMEL 3000/SIMON

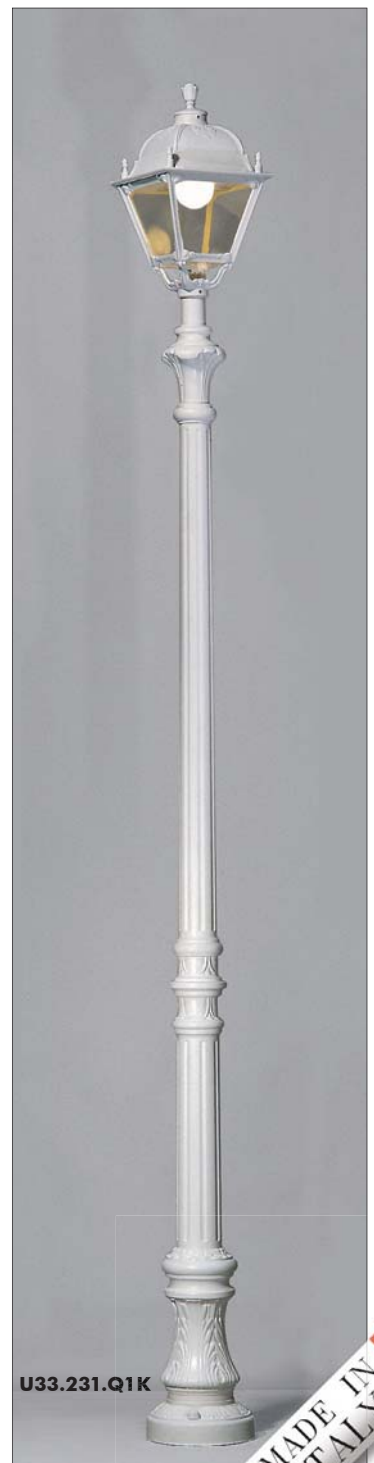
LARGE SIZE



U33.231.R30.Q1K



U33.231.R20.Q1K



U33.231.Q1K



MADE IN ITALY



KARMEI 3000 OFIR/SIMON 2L
U33.231.R20
U35.231.R20

GX53
Pcs 1
Kg 36,5
mc 0,295

KARMEI 3000 OFIR/SIMON 3L
U33.231.R30
U35.231.R30

GX53
Pcs 1
Kg 41,1
mc 0,369

KARMEI 3000/SIMON
U33.231
U35.231

GX53
Pcs 1
Kg 30,1
mc 0,223

KARMEI 3000 OFIR/SIMON 2L
U33.231.R20
U35.231.R20

GX53
Pcs 1
Kg 36,5
mc 0,295

KARMEI 3000 OFIR/SIMON 3L
U33.231.R30
U35.231.R30

GX53
Pcs 1
Kg 41,1
mc 0,369

KARMEL 3500-4000/SIMON

LARGE SIZE



U33.234.M20.Q1K



U33.171.Q1K



U33.234.Q1K





KARMEL 3500 ADAM/SIMON 1L	KARMEL 4000 ADAM/SIMON 1L
U33.234.M10	U33.237.M10
GX53 U35.234.M10	U35.237.M10
Pcs 1 Kg 34,5 mc 0,280	Pcs 1 Kg 38 mc 0,287

KARMEL 3500/SIMON
U33.234
GX53 U35.234
Pcs 1 Kg 32,6 mc 0,249

KARMEL 3500 ADAM/SIMON 2+1	KARMEL 4000 ADAM/SIMON 2+1
U33.234.M21	U33.237.M21
GX53 U35.234.M21	U35.237.M21
Pcs 1 Kg 46,4 mc 0,404	Pcs 1 Kg 48,8 mc 0,431

KARMEL 3500 ADAM/SIMON 3L	KARMEL 4000 ADAM/SIMON 3L
U33.234.M30	U33.237.M30
GX53 U35.234.M30	U35.237.M30
Pcs 1 Kg 47,8 mc 0,414	Pcs 1 Kg 50,3 mc 0,441

KARMEL 3500 ADAM/SIMON 3+1	KARMEL 4000 ADAM/SIMON 3+1
U33.234.M31	U33.237.M31
GX53 U35.234.M31	U35.237.M31
Pcs 1 Kg 52,4 mc 0,476	Pcs 1 Kg 54,8 mc 0,503

KARMEL 3500 ADAM/SIMON 2L	KARMEL 4000 ADAM/SIMON 2L
U33.234.M20	U33.237.M20
GX53 U35.234.M20	U35.237.M20
Pcs 1 Kg 41,8 mc 0,342	Pcs 1 Kg 44,3 mc 0,369