

ELIA HIGH POWER LED

GRAND SIZE



Square lantern made in shockproof resin material, UV rays stabilized, rust and corrosion-free. Modular construction suitable for post top, wall and hanging installation. Provided with reflective ceiling designed to host the lighting source and equipped with TÜV-CB certified, long-life and efficient **E27 high power LED lamp included**. Insulation class II, Protection rating IP55.

*Lanterna quadra realizzata in resina antiurto, stabilizzato ai raggi UV, inattaccabile da ruggine e corrosione. Idonea per il montaggio a palo, a sospensione o a parete. Provvista di soffitto riflettente progettato per accogliere la sorgente luminosa e fornita **completa di lampada a LED E27 ad ALTA POTENZA**, certificata TÜV-CB di lunga durata ed elevata efficienza. Classe di isolamento II, grado di protezione IP55.*

E27 HIGH POWER LED

INDOOR & OUTDOOR USE

+80°C
-30°

90% HUMIDITY

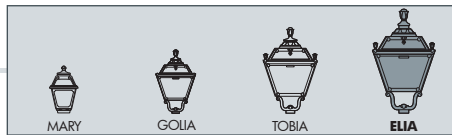
VOLTAGE SURGE RESISTANT

DRIVER SILICONE PROTECTION



Q43.000.W1R





ELIA HIGH POWER LED - LANTERN COMPONENTS

IP55



Decorative **PINNACLE** to be mounted on the roof top for post installation or on the lantern base for hanging installation.

***PINNACOLO** decorativo applicabile alla sommità del tetto (montaggio a palo) o sulla base della gabbia (montaggio a sospensione).*

Lantern **ROOF** made of shockproof resin material, UV-rays stabilized.

***TETTO** realizzato in resina antiurto, stabilizzata ai raggi UV.*

High temperature resistant reflective **CEILING** made of shockproof resin material. Provided with E27 lampholder and equipped with **HIGH POWER LED lamp**. Designed to host and protect the lighting source, granting its safe and quick installation.

***SOFFITTO** riflettente realizzato in resina antiurto ad alta resistenza al calore. Fornito completo di portalamпада E27 e provvisto di lampada a **LED ad ALTA POTENZA**. Progettato per accogliere e proteggere la sorgente luminosa garantendone una veloce e sicura installazione.*

DIFFUSER of UV-rays stabilized PMMA, with recess for a power supply cable. Provided with silicone rubber gasket to ensure high protection against external agents.

***DIFFUSORE** in PMMA resistente ai raggi UV, provvisto di sede per l'alloggiamento del cavo di alimentazione. Provvisto di guarnizione in gomma siliconica per garantire un alto livello di protezione contro gli agenti esterni.*

CAGE in one piece only made of shockproof resin material, UV-rays stabilized, rust and corrosion-free.

***GABBIA** realizzata in un unico pezzo e fabbricata in resina antiurto, stabilizzata ai raggi UV, inattaccabile da ruggine e corrosione.*

ELIA HIGH POWER LED

Q43.000 *



Dimensions and weight

Height: 740 mm
Width: 430 mm
Depth: 430 mm
Weight: 7,5 Kg
Junction to support: diameter 60 mm
Area exposed to wind pressure:
CxS = m² 0,165

Moulded colours:

Black White

Painted colours:

Antique green Antique bronze

Diffuser PMMA:

Clear Opal

HIGH POWER LED



- **COST SAVING:** long-life and efficient LED light source.
- **BUILT-IN DRIVER:** quick and easy lamp replacement.
- **GREAT FLEXIBILITY:** E27 standard lamp holder.
- **FUTURE-PROOFED LUMINARIES:** performances easy to upgrade to latest technology developments.
- **SUITABLE FOR OUTDOOR USE:** built-in driver fully protected against heat and humidity by silicone paste.

Lantern equipped with TÜV-CB certified, long-life, and efficient **E27 high power LED lamp**, granting the same luminous flux of traditional SON/HQI lighting sources. The lamp can be quickly and easily replaced, making the luminaries maintenance very simple.

100 - 240 V

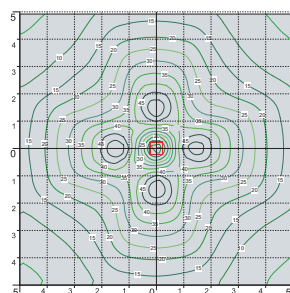
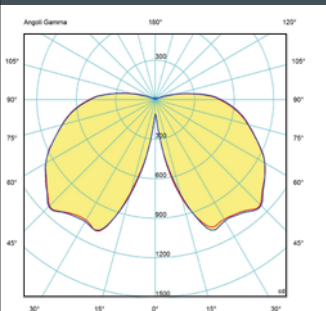
LAMP	POWER	LUMINOUS FLUX UP TO	COLOUR TEMP.	*ADD. SUFFIX
E27 LED	50 W	6550 Lm	4000 K	.H1L
			3000 K	.H1R
E27 LED	60 W	7600 Lm	4000 K	.W1L
			3000 K	.W1R

LED LAMPS



Comply with: EU2019/2015
EU2019/2020
Technical details on page 596.

PHOTOMETRIC DATA SAMPLE



ELIA E27 LED HIGH POWER 50W

POST height 4,5mt
10x10mt area: average 21 lux

The photometric data for all the versions are available upon request or on our website.

* ADD THESE SUFFIXES TO THE REFERENCES MENTIONED IN THE CATALOGUE

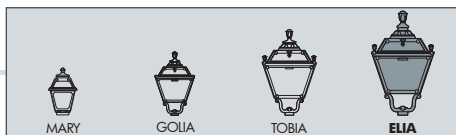
ELIA

GRAND SIZE



Q43.221.W1L





GIONA 5000/ELIA	
Q43.227	
GX53 Q45.227	
Pcs 1 Kg 67,5 mc 1,112	430
5680	
400	

GIONA 4000/ELIA	GIONA 4500/ELIA
Q43.221	Q43.224
GX53 Q45.221	Q45.224
Pcs 1 Kg 62,5 mc 0,862	Pcs 1 Kg 65,5 mc 0,982
430	
4680 5180	
400	

KARMEL 3500/ELIA	KARMEL 4000/ELIA
Q43.234	Q43.237
GX53 Q45.234	Q45.237
Pcs 1 Kg 38,6 mc 0,402	Pcs 1 Kg 42 mc 0,453
430	
4180 4680	
Ø 275	

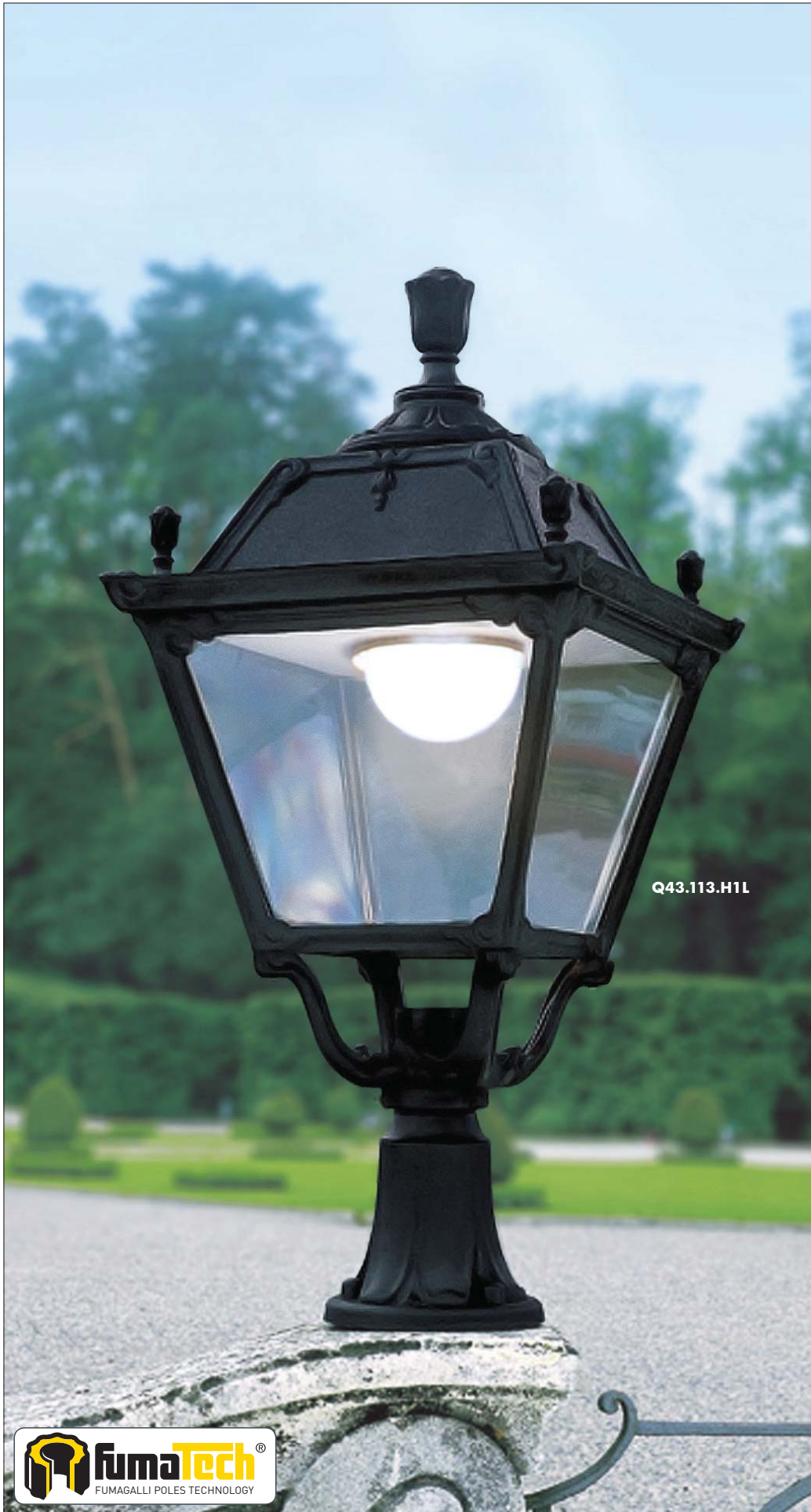
KARMEL 3000/ELIA	
Q43.231	
GX53 Q45.231	
Pcs 1 Kg 33 mc 0,362	
430	
3680	
Ø 275	

ELIA	
Q43.000	
GX53 Q45.000	
Pcs 1 Kg 7,5 mc 0,182	430
740	
Ø 60	

TABOR/ELIA	HOREB/ELIA
Q43.204	Q43.207
GX53 Q45.204	Q45.207
Pcs 1 Kg 33 mc 0,362	Pcs 1 Kg 35,5 mc 0,402
430	
3680 4180	
Ø 275	

GIONA 4000/ELIA

GRAND SIZE



Q43.113.H1L

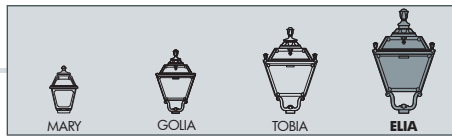


Q43.171.H1L



Q45.221.C8K





ADAM/ELIA
Q43.171
Q45.171

GX53
Pcs 1
Kg 9
mc 0,190

GIONA 4000 ADAM/ELIA 2L
Q43.221.M20
Q45.221.M20

GX53
Pcs 1
Kg 73
mc 0,863

LOT/ELIA
Q43.113
Q45.113

GX53
Pcs 1
Kg 8,4
mc 0,182

GIONA 4000 ADAM/ELIA 1L
Q43.221.M10
Q45.221.M10

GX53
Pcs 1
Kg 64
mc 0,752

GIONA 4000 ADAM/ELIA 2L
Q43.221.M20
Q45.221.M20

GX53
Pcs 1
Kg 82
mc 1,100

GIONA 4000 ADAM/ELIA 3L
Q43.221.M30
Q45.221.M30

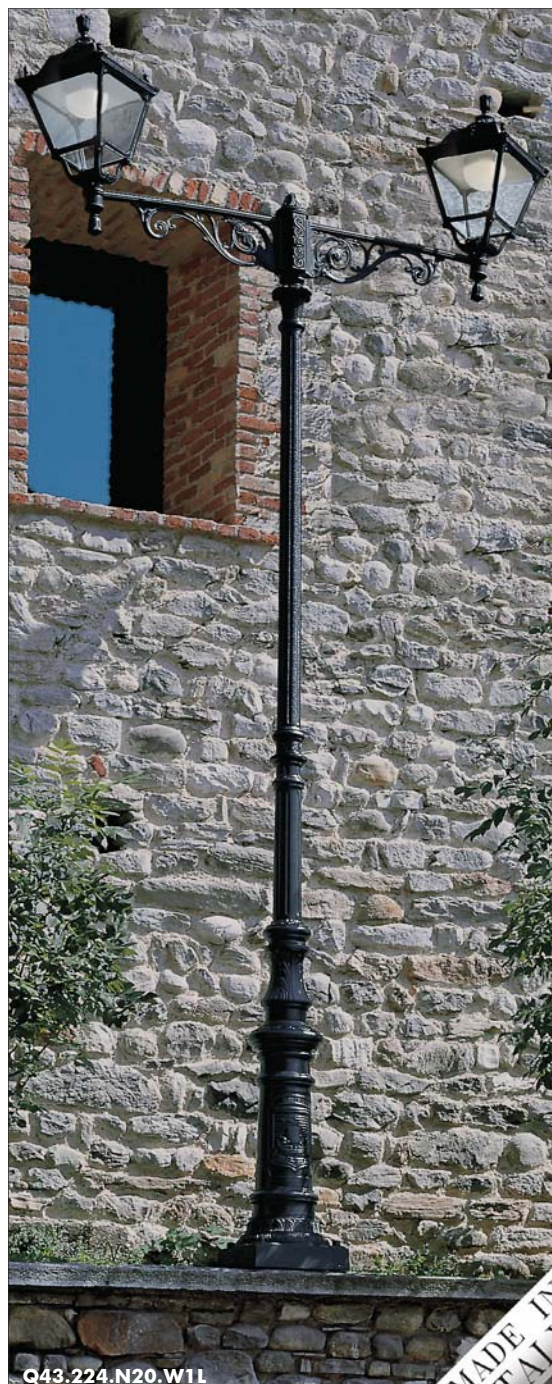
GX53
Pcs 1
Kg 82
mc 1,100

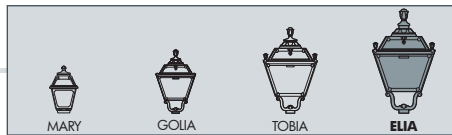
GIONA 4000 ADAM/ELIA 2+1
Q43.221.M21
Q45.221.M21

GX53
Pcs 1
Kg 80,5
mc 0,931

GIONA 4500-5000/ELIA

GRAND SIZE





COMPANY
SOLAR
UP&DOWN
DOWNLIGHT
IN-GROUND
BRICKLIGHT
FLOODLIGHT
BOLLARD
BULKHEAD
GARDEN
URBAN CLASSIC
URBAN MODERN
POST
LAMPS
REFERENCES

GIONA 4500 ARON/ELIA		GIONA 5000 ARON/ELIA	
Q43.224.N10		Q43.227.N10	
GX53 Q45.224.N10	GX53 Q45.227.N10		
Pcs 1 Kg 71,5 mc 0,949	Pcs 1 Kg 73,5 mc 1,191		

ARON/ELIA	
Q43.172	
Q45.172	
GX53	
Pcs 1 Kg 13 mc 0,223	

GIONA 4500 ARON/ELIA 2L		GIONA 5000 ARON/ELIA 2L	
Q43.224.N20		Q43.227.N20	
GX53 Q45.224.N20	GX53 Q45.227.N20		
Pcs 1 Kg 82,5 mc 1,196		Pcs 1 Kg 84,5 mc 1,329	

GIONA 4500 ARON/ELIA 4L		GIONA 5000 ARON/ELIA 4L	
Q43.224.N40		Q43.227.N40	
GX53 Q45.224.N40	GX53 Q45.227.N40		
Pcs 1 Kg 105 mc 1,444		Pcs 1 Kg 107 mc 1,605	

ERMON.R/ELIA	
Q43.195 resin	
GX53 Q45.195 resin	
Pcs 1 Kg 13,5 mc 0,250	