

PIETRO GX53 LED - FLAT DIFFUSER

GRAND SIZE



Square lantern in classic style, made of shockproof resin material, UV-rays stabilized, rust and corrosion-free. Modular construction suitable for post top, hanging and wall installation. Supplied as standard with **FLAT diffuser** and equipped with TÜV-CB certified, long-life, powerful, efficient and **Kelvin settable GX53 LED modular system**. Designed according to the international regulations against light pollution (standard UNI 10819). Insulation class II, Protection rating IP 55.

*Lanterna quadra in stile classico, realizzata in resina antiurto, stabilizzata ai raggi UV, inattaccabile da ruggine e corrosione. Idonea per il montaggio a palo, a sospensione o a parete. Fornita con **diffusore piatto** ed equipaggiata con **sistema modulare a LED GX53 con Kelvin impostabile** certificato TÜV-CB di lunga durata ed alta efficienza. Progettato in ottemperanza alle norme internazionali contro l'inquinamento luminoso (standard UNI 10819). Classe di isolamento II, grado di protezione IP55.*

U45.000.D8K



CCT SETTABLE

3000 K 4000 K 6500 K

SDCM <6





PIETRO GX53 LED - LANTERN COMPONENTS

IP55



Decorative **PINNACLE** to be mounted on the roof top for post installation or on the lantern base for hanging installation.

PINNACOLO decorativo applicabile alla sommità del tetto (montaggio a palo) o sulla base della gabbia (montaggio a sospensione).

LANTERN ROOF made of shockproof resin material, UV-rays stabilized.

TETTO realizzato in resina antiurto, stabilizzata ai raggi UV.

DIFFUSER with **FLAT** shape made of UV-rays stabilized polymethylmethacrylate (PMMA), provided with silicone rubber gasket to ensure an increased protection against external agent.

DIFUSORE in polimetilmetacrilato (PMMA) con configurazione piatta, provvisto di guarnizione in gomma siliconica per garantire una migliore protezione contro gli agenti esterni.

CAGE in one piece only made of shockproof resin material, UV-rays stabilized, rust and corrosion-free.

GABBIA realizzata in un unico pezzo e fabbricata in resina antiurto, stabilizzata ai raggi UV, inattaccabile da ruggine e corrosione.

PIETRO GX53 LED

U45.000 *



Dimensions and weight

Height: 770 mm
Width: 430 mm
Depth: 430 mm
Weight: 9,1 Kg
Junction to support: diameter 60 mm
Area exposed to wind pressure: CxS = m² 0,182

Moulded colours:

Black White

Painted colours:

Antique green Antique bronze

Diffuser PMMA:

Clear Opal

GX53 LED



- **COST SAVING:** long-life and efficient LED light sources.
- **BUILT-IN DRIVER:** quick and easy lamp replacement.
- **GREAT FLEXIBILITY:** GX53 standard lamp holder.
- **FUTURE-PROOFED LUMINARIES:** performances easy to upgrade to latest technology developments.
- **SUITABLE FOR OUTDOOR USE:** built-in driver fully protected against heat and humidity by silicone paste.

Lantern supplied with white resin **CEILING** provided with 8x TÜV-CB certified, long-life, efficient and **Kelvin settable GX53 LED lamps included**. Each lamp can be quickly and easily replaced individually, making the luminaries maintenance very simple.

100 - 240 V

LAMP	POWER	LUMINOUS FLUX (Φ TOTAL) UP TO	COLOUR TEMP.	*ADD. SUFFIX
	8x 10 W 80 W	10320 Lm	6500 K	.D8K
			4000 K	
			3000 K	

LED LAMPS



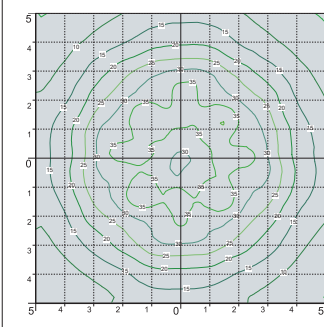
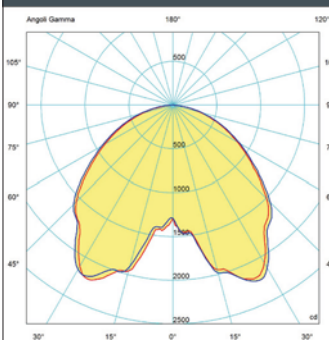
Comply with: EU2019/2015
EU2019/2020
Technical details on page 596.

CCT SETTABLE LED LAMP



CCT switch settable in three different positions, to select the desired Kelvin temperature (3000K/4000K/6500K) and get a customized ambience.

PHOTOMETRIC DATA SAMPLE



PIETRO GX53 LED 8X10W

POST height 4,5mt
10x10mt area: average 28 lux

The photometric data for all the versions are available upon request or on our website.

* ADD THESE SUFFIXES TO THE REFERENCES MENTIONED IN THE CATALOGUE

PIETRO

GRAND SIZE



U43.224.H1L



U43.113.D8K

MADE IN ITALY



GIONA 5000/PIETRO	
	U43.227
GX53	U45.227
Pcs 1 Kg 67,5 mc 1,112	430

GIONA 4000/PIETRO	GIONA 4500/PIETRO
U43.221	U43.224
GX53 U45.221	U45.224
Pcs 1 Kg 62,5 mc 0,862	Pcs 1 Kg 65,5 mc 0,982

KARMEL 3500/PIETRO	KARMEL 4000/PIETRO
U43.234	U43.237
GX53 U45.234	U45.237
Pcs 1 Kg 38,6 mc 0,402	Pcs 1 Kg 42 mc 0,453

LOT/PIETRO	
	U43.113
GX53	U45.113
Pcs 1 Kg 8,4 mc 0,182	430
	940
	Ø 190

KARMEL 3000/PIETRO	
	U43.231
GX53	U45.231
Pcs 1 Kg 33 mc 0,362	
	3710

PIETRO	
	U43.000
GX53	U45.000
Pcs 1 Kg 7,5 mc 0,182	430
	770
	Ø 60

TABOR/PIETRO	HOREB/PIETRO
U43.204	U43.207
GX53 U45.204	U45.207
Pcs 1 Kg 33 mc 0,362	Pcs 1 Kg 35,5 mc 0,402

COMPANY SOLAR UP&DOWN DOWNLIGHT IN-GROUND BRICKLIGHT FLOODLIGHT BOLLARD BULKHEAD GARDEN URBAN CLASSIC URBAN MODERN POST LAMPS REFERENCES

GIONA 4000/PIETRO

GRAND SIZE



U43.221.M21.W1L



U43.171.W1L



U45.221.M10.C8K





ADAM/PIETRO
U43.171
GX53 U45.171
Pcs 1
Kg 9
mc 0,190

GIONA 4000 ADAM/PIETRO 3L
U43.221.M30
GX53 U45.221.M30
Pcs 1
Kg 82
mc 1,100

GIONA 4000 ADAM/PIETRO 2+1
U43.221.M21
GX53 U45.221.M21
Pcs 1
Kg 80,5
mc 0,931

GIONA 4000 ADAM/PIETRO 1L
U43.221.M10
GX53 U45.221.M10
Pcs 1
Kg 64
mc 0,752

GIONA 4000 ADAM/PIETRO 2L
U43.221.M20
GX53 U45.221.M20
Pcs 1
Kg 73
mc 0,863

GIONA 4000 ADAM/PIETRO 2L
U43.221.M20
GX53 U45.221.M20
Pcs 1
Kg 73
mc 0,863

GIONA 4500-5000/PIETRO

GRAND SIZE



U43.224.N20.W1L



U43.224.N10.H1L



U43.195

MADE IN ITALY



GIONA 4500 ARON/PIETRO 1L	GIONA 5000 ARON/PIETRO 1L
U43.224.N10	U43.227.N10
GX53 U45.224.N10	U45.227.N10
Pcs 1 Kg 71,5 mc 0,949	Pcs 1 Kg 73,5 mc 1,191

ARON/PIETRO	
U43.172	U45.172
GX53	
Pcs 1 Kg 13 mc 0,223	

GIONA 4500 ARON/PIETRO 2L	GIONA 5000 ARON/PIETRO 2L
U43.224.N20	U43.227.N20
GX53 U45.224.N20	GX53 U45.227.N20
Pcs 1 Kg 82,5 mc 1,196	Pcs 1 Kg 84,5 mc 1,329

GIONA 4500 ARON/PIETRO 4L	GIONA 5000 ARON/PIETRO 4L
U43.224.N40	U43.227.N40
GX53 U45.224.N40	GX53 U45.227.N40
Pcs 1 Kg 105 mc 1,444	Pcs 1 Kg 107 mc 1,605

ERMON.R/PIETRO
U43.195 resin
GX53 U45.195 resin
Pcs 1 Kg 13,5 mc 0,250